

# DLED-466S

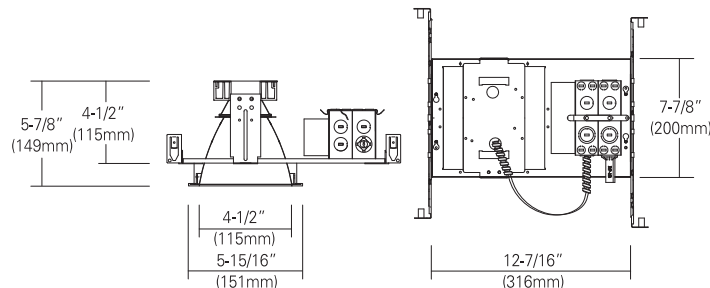
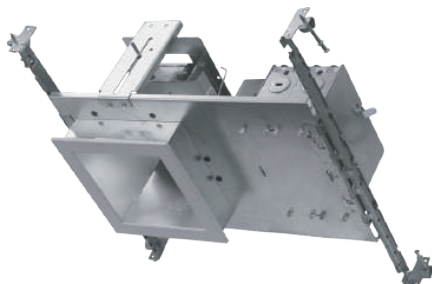
## 5" Square Architectural Downlight

14W & 23W LED, 120V ~ 277V Input



Catalog #		Type
Project		Date
Prepared by		

### 5" Architectural LED



Ceiling Cut-out : 5-1/2" x 5-1/2"

#### DESCRIPTION

5" Square Architectural Downlight combined with LED module and integral reflector. This is designed for use in non-insulated ceiling. Insulation material must be kept a minimum of 3" from fixture.

#### SPECIFICATION

LED Quantity	1EA (COB)	
Input Voltage	120V ~ 277V AC	
Wattage (Typ)	<b>14 W</b>	<b>23 W</b>
Lumen (Typ)	980	1,610
Efficacy (LPW)	70 lm/W	70 lm/W
Beam Angle	45°	
C R I (Typical)	80, 90	
Color (+/-5%)	2700K, 3000K, 4000K, 5000K	
Dimming	Triac & 0-10V the both(Consult with factory for approved dimmers)	

#### FEATURES and FUNCTIONS

- Galvanized steel construction.
- Housing adjusts for ceilings up to 1-1/4" thick.
- Aluminum extruded Heat sink designed to facilitate heat dissipation
- Heavy gauge aluminum reflector anodized in clear, haze, gold, champagne and pewter color finish.
- (5)1/2" knockouts with true pry-out slots and (4) knockouts with Romex cable clamp.
- 24" Bar Hangers provide stability and support on joists and T-Bar Grid ceilings. Housing can be positioned at any point within 24" joist span.
- Optional-Commercial mounting kit provided up to 5" vertical adjustment, which accommodates 1/2" EMT conduit, optional HB-24 or HBC-24 bar hanger or lathing channels for T-bar grid or concealed spline ceiling.
- 120~277V input high efficacy drivers with the capability to dim by
  - ① a Triac 120V low voltage electronic dimmer switches
  - ② by 0-10V dimmer switches.
 (consult to factory on other options of Dali, PMW etc).

#### Listing

- ETL & cETL Listed
- State of California Title 24
- Energy star Approved & Listed
- Damp location

#### Warranty

- 5years of lamp life.

#### ORDERING INFORMATION

Housing	Watts	CRI	CCT	Driver	Trim	Reflector Finish	Metal Trim Ring Finish
DLED-466S 5", COB	14 14W	8 80	27 2700K	UTD 120V,	TML-414S	HC Haze Clear	WH White
	23 23W	9 90	30 3000K	Triac Dimming (Standard)		WH White	BK Black
			40 4000K	UZTD 120~277V,			
			50 5000K	0~10V Dimming			
*Option - EM=Emergency battery backup						* Option-available in self-flanged(-SF)	*Consult with factory for custom finishes
Example : DLED-466S-14-830-UTD					Example : TML-414S-HC-WH		
<div><div></div><div>—</div><div></div><div>—</div><div></div><div>—</div><div></div></div>					<div><div></div><div>—</div><div></div><div>—</div><div></div></div>		