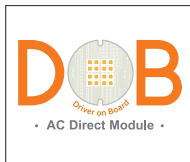


# TB02

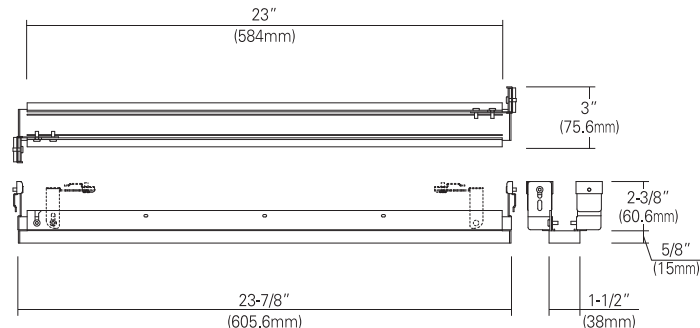
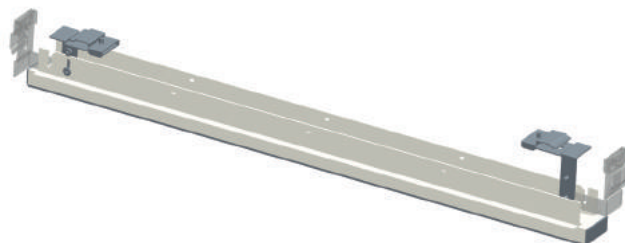
120V ~ 277V

T-Form™ LED Light



Catalog #		Type
Project		Date
Prepared by		

LED



## DESCRIPTION

T-form LED light is designed to install existing T-bar grid ceiling with easier snap-in spring and off-board J-box allowed to be mounted adjacent to the light bar without toolless. Ideally to replace lighting fixture for all kinds of indoor panel and troffer light. The light weighted and low profile design provides easy installation and clean look on ceiling surface. It can be continuous-row mounted and even light uniformity in seamless, and form in multiple modular in different configuration. Perfectly available in office, school, airport, hospital and any location area to require a unique architectural light design.

## SPECIFICATION

HOUSING	TB02	
Wattage (Typ)	20W	35W
Lumen (Typ)	2,100	3,675
Efficacy (LPW)	105 lm/W	105 lm/W
CRI (Typical)	80	
Color (+/-5%)	4000K, 5000K, 5700K	
Dimming	Triac & 0-10V the both(Consult with factory for approved dimmers)	

## FEATURES and FUNCTIONS

- Housing- painted aluminum extruded body to facilitate heat dispatch to the maximum
- Diffuser- impact-resistance and high transmitting PC lens and end caps.
- Include 120~277V input high efficacy driver with capability to dim using most 0-10V dimmer switches. The driver feature power factor >90, THD >20% and has integral thermal protection to sense over temperature or internal failure.
- J-box- Listed for through branch circuit wiring (4in, 4out) and (5) 1/2" knockouts with true pry-out slot and Romax cable clamp.
- Mounting- install fixture with adjustable hinged bracket to be replaced with an existing T-bar removing or direct mounted onto T-bar with special clips (to be provided).

### Listing

- CSA-us Certificated
- DLC qualified

- State of California Title 24
- Damp location
- 5years of lamp life.

### Warranty

## ORDERING INFORMATION

Housing	Watts	CRI	CCT	Finish
TB02 24"	20 20W 35 35W	8 80	40 4000K 50 5000K 57 5700K	WH White

\*Consult with factory for custom finishes

Example : TB02-20-840-WH

## Installation

